

Preparatory Rudiments of Music

Unit I Pitch

Lesson: *Tones, Semitones & Accidentals*
Worksheets

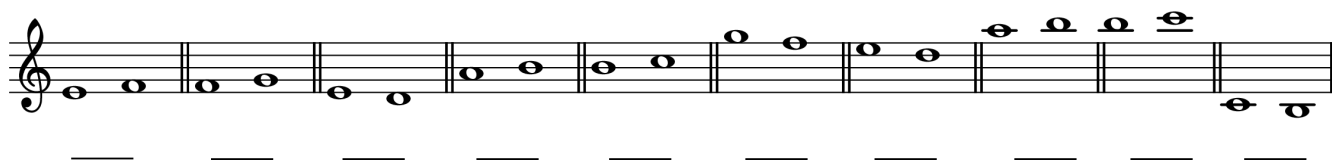
<http://evdokimoff.net>

Table of Contents

1.6 Whole Tones & Semitones.....	3
1.7 Accidentals: Sharps.....	4
1.8 Accidentals Flats.....	6
1.9 Accidentals: Natural Signs.....	8

1.6 Whole Tones & Semitones

1.6.1 Identify the following pairs of notes as whole tones (WT) or semitones (ST):



A musical staff in treble clef containing 11 pairs of notes, each pair separated by a double bar line. The pairs are: 1. G4 and A4; 2. A4 and B4; 3. B4 and C5; 4. C5 and D5; 5. D5 and E5; 6. E5 and F5; 7. F5 and G5; 8. G5 and A5; 9. A5 and B5; 10. B5 and C6; 11. C6 and B5.

1.6.2 Write whole tones above the following notes:

Example



A musical staff in bass clef containing 10 notes, each separated by a double bar line. The notes are: G2, A2, B2, C3, D3, E3, F3, G3, A3, and B3.

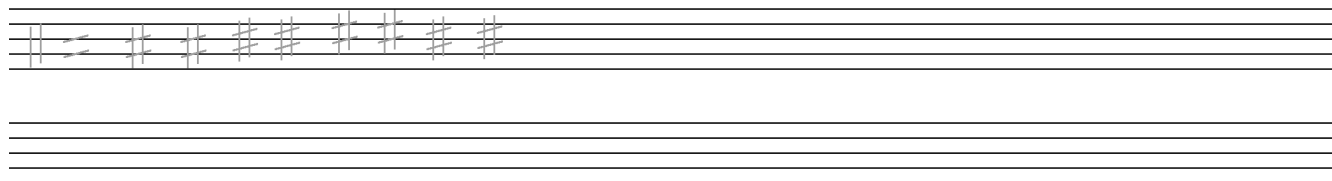
1.7 Accidentals: Sharps

1.7.1 Identify the following pairs of notes as whole tones (WT) or semitones (ST):





1.7.2 Practice writing sharps on both lines and spaces by first tracing over the ones shown, then continue on to fill up both staves.



1.7.3 Raise the following notes by a semitone using a sharp:

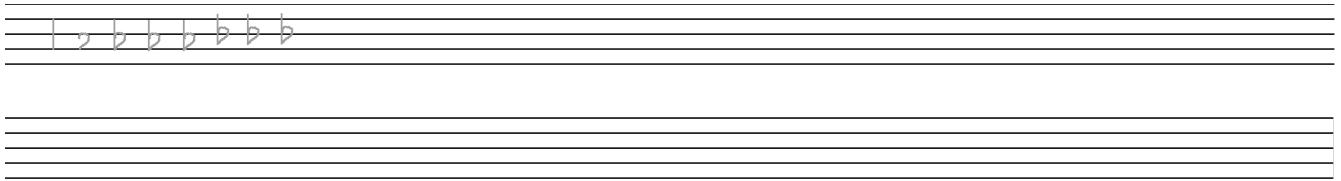


1.7.4 Write whole tones above the following notes using sharps when necessary:



1.8 Accidentals Flats

1.8.1 Practice writing flat signs on both lines and spaces by first tracing over the ones shown, then continue on to fill up both staves.



1.8.2 Lower the following notes by a semitone using flats:



1.8.3 Identify the following pairs of notes as whole tones (WT) or semitones (ST):

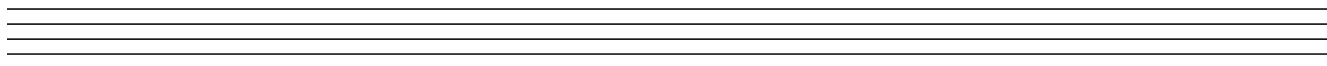
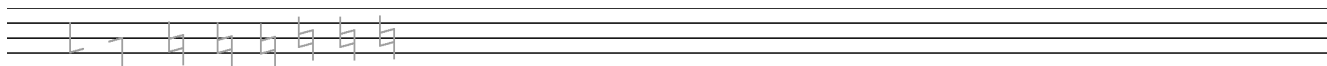
Two staves of musical notation in treble clef. Each staff contains five pairs of notes, separated by double bar lines. Below each pair is a horizontal line for the student to write the interval type (WT or ST).
Staff 1: 1. G4, A4; 2. B4, C5; 3. D5, E5; 4. F5, G5; 5. A5, B5.
Staff 2: 1. C5, B4; 2. B4, A4; 3. G4, F4; 4. E4, D4; 5. C4, B3.

1.8.4 Write the enharmonic equivalent for each of the following notes:

Two staves of musical notation in bass clef. Each staff contains five notes, separated by double bar lines. The notes are: Staff 1: B2, A2, G2, F2, E2; Staff 2: D2, C2, B1, A1, G1.

1.9 Accidentals: Natural Signs

1.9.1 Practice writing natural signs on both lines and spaces by first tracing over the ones shown, then continue on to fill up both staves.



1.9.2 Identify the following note pairs are whole tones (WT), semitones (ST) or enharmonically equivalent (EN):

